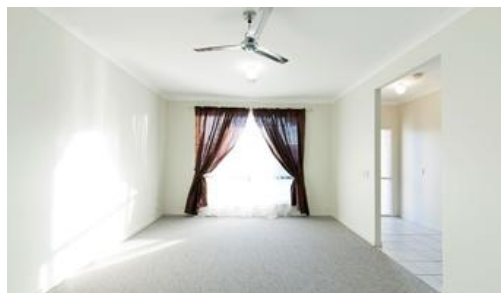


Sold



14 Greenleaf Street, Upper Coomera



MORE VALUE FOR YOUR DOLLAR

When new homes are being built smaller and land size is shrinking BUT the price is increasing, here is your opportunity to get MORE...

This; beautiful, single storey, large family home, on a large level block is located in the exclusive Reserve Rise Estate.

The spacious; 3 living areas, 5 bedrooms and outdoor living offers plenty of room for the whole family. With a North-Easterly facing backyard to take advantage of the bushland views and the passive solar advantages, this home is priced to sell.

Features Include:

- High (2700mm / 9ft) ceiling height throughout
- 5 bedrooms (5th at front can double as study)
- Ensuite with spa & large WIR to Master Bedroom
- All other bedrooms with built-ins robes
- Separate Lounge room
- Separate tiled Dining room
- Large Kitchen with extra long breakfast bar
- Stainless Steel Kitchen appliances inc. Dishwasher
- Large tiled open Family / Meals room off the kitchen
- Separate toilet and Laundry
- All glassing starts high (from approx 2400mm) to allow more light

The above information provided has been furnished to us by the vendor/s. We have not verified whether or not that information is accurate and do not have any belief in one way or the other in its accuracy. We do not accept any responsibility to any person for its accuracy and do no more than pass it on. All interested parties should make and rely upon their own inquiries in order to determine whether or not this information is in fact accurate.

5 2 2

Price	SOLD
Property Type	residential
Property ID	736
Land Area	686 m2
Floor Area	239 m2

Agent Details

Tony Karkovic - 07 5512 2615

Office Details

Oxenford
Shop 2 / 161 Old Pacific Highway
Oxenford QLD 4210 Australia
07 5529 9777

