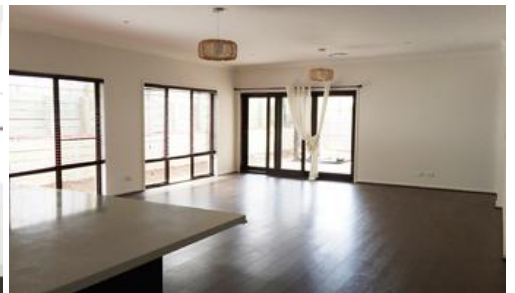


Leased



**14 Serpentine St, Ormeau Hills**



## SPACIOUS HOME IN SORT AFTER LOCATION

This large home features:

- \* Entry Foyer Area
- \* Ducted Air Conditioning Throughout
- \* Modern Kitchen With Built In Microwave, Dishwasher
- \* Walk In Pantry, Granite Bench Tops, Gas Cooking, Large Island Bench, Plumbed for Fridge
- \* 9Ft Ceilings
- \* Living/Meals Area With Floorboards and Plenty of Windows
- \* Separate Loungeroom or Formal Dining Room With Double Doors
- \* 4 Double Bedrooms - With Floorboards Throughout
- \* Master Bedroom Has Walk In Robe With Shelving, Ensuite, And Separate Toilet
- \* 3 Other Bedrooms Double Size With Built In Robes
- \* Bathroom Has Separate Bath & Shower
- \* Toilet Separate
- \* Children's Retreat Area or Study
- \* Laundry With Benchtops & Outside Access
- \* Double Lock Up Auto Garage. Alfresco Area & Vegie Patch

Low Maintenance Block. Sorry No Pets

Tenants to Pay 100% Water Usage

 4  2  2

<b>Price</b>	\$450 per week
<b>Property Type</b>	rental
<b>Property ID</b>	1032

### Agent Details

Quantum Property Services - 07 5529 9777

### Office Details

Oxenford  
Shop 2 / 161 Old Pacific Highway  
Oxenford QLD 4210 Australia  
07 5529 9777



The above information provided has been furnished to us by the vendor/s. We have not verified whether or not that information is accurate and do not have any belief in one way or the other in its accuracy. We do not accept any responsibility to any person for its accuracy and do no more than pass it on. All interested parties should make and rely upon their own inquiries in order to determine whether or not this information is in fact accurate.