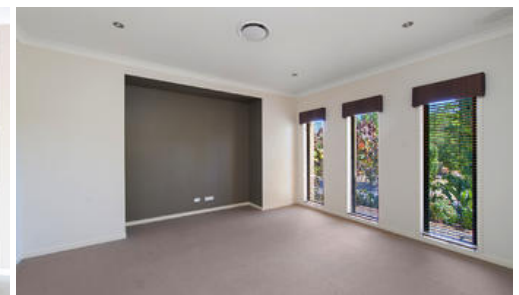




59 Laughlen Ch, Pacific Pines



EX-DISPLAY HOME - LOOKING FOR QUALITY THEN LOOK NO FURTHER

As you walk through the double door entry you will feel this home embracing you with it's space and quality. The home is built for the entertainer inside and out. With massive park and playground opposite the front of this home for the whole family to enjoy.

This lovely home features:

- 3 Bedrooms with built-ins
- Large master bedroom with walk through robe and massive ensuite with corner spa and double vanity
- Open plan lounge/dining/kitchen
- Modern kitchen with stainless steel appliances including commercial oven, 5 gas burner and butler pantry
- Dishwasher
- Separate living/media room
- Ducted air conditioning
- Alarm system
- Outdoor covered entertainment area
- Fully fenced back yard
- Double lock up garage
- Close to schools and shops

3 2 2

Price
Property Type
Property ID

SOLD
residential
963

Agent Details

Simon Durante - 0418 521 341

Office Details

Oxenford
Shop 2 / 161 Old Pacific Highway
Oxenford QLD 4210 Australia
07 5529 9777



The above information provided has been furnished to us by the vendor/s. We have not verified whether or not that information is accurate and do not have any belief in one way or the other in its accuracy. We do not accept any responsibility to any person for its accuracy and do no more than pass it on. All interested parties should make and rely upon their own inquiries in order to determine whether or not this information is in fact accurate.